

LESOTHO HIGHLANDS WATER PROJECT



THE JOURNEY BEFORE CONSTRUCTION



Makananelo Kumalo

LHDA

03 April 2019

INTRODUCTION



- Large infrastructure projects will have impacts on the environment and communities
- LHDA to implement mitigation measures to ensure environmental protection and livelihood restoration
- Stakeholder engagement at the centre to get buy-in and build consensus



More than 30 years of successful collaboration



SETTING THE SCENE

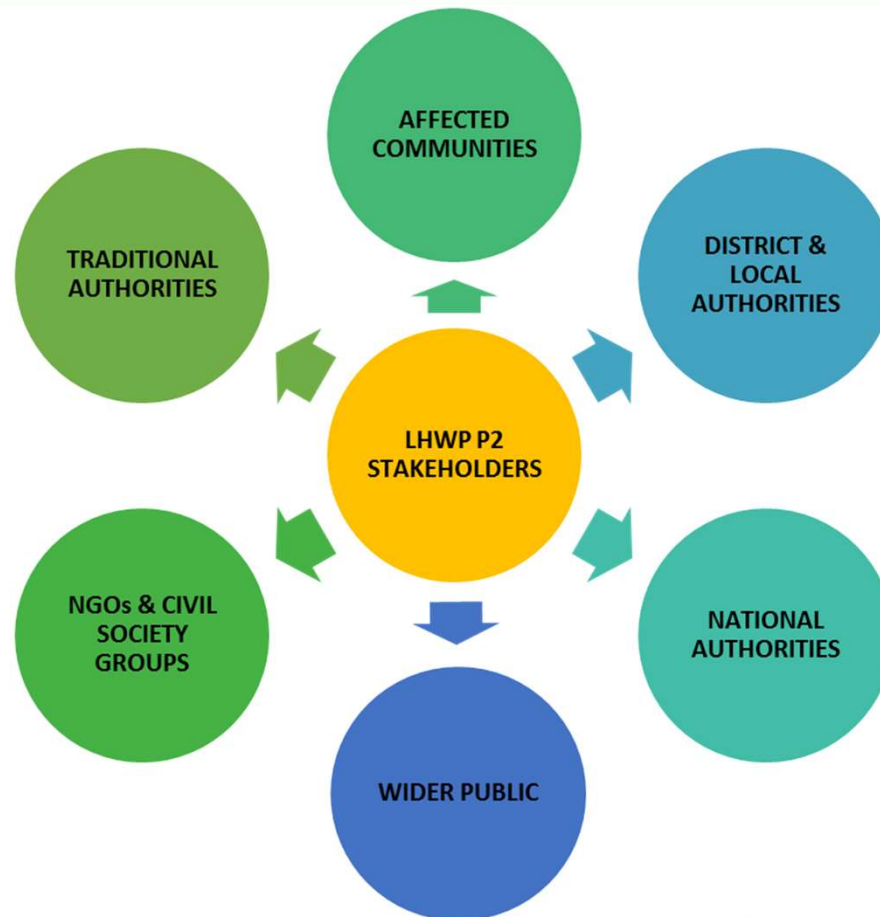


- Phase I - accolades on engineering component
- BUT**
- Less successful on environmental and social components
- Lessons learnt from Phase I and other similar projects
 - Engage communities early
 - Work with local communities pro-actively
 - Ensure broad-based public participation in all project stages
- Objective
 - Environmental and social issues at the fore front
 - Ensure that communities are not left worse-off after the project

More than 30 years of successful collaboration



STAKEHOLDERS



More than 30 years of successful collaboration



STAKEHOLDER ENGAGEMENT



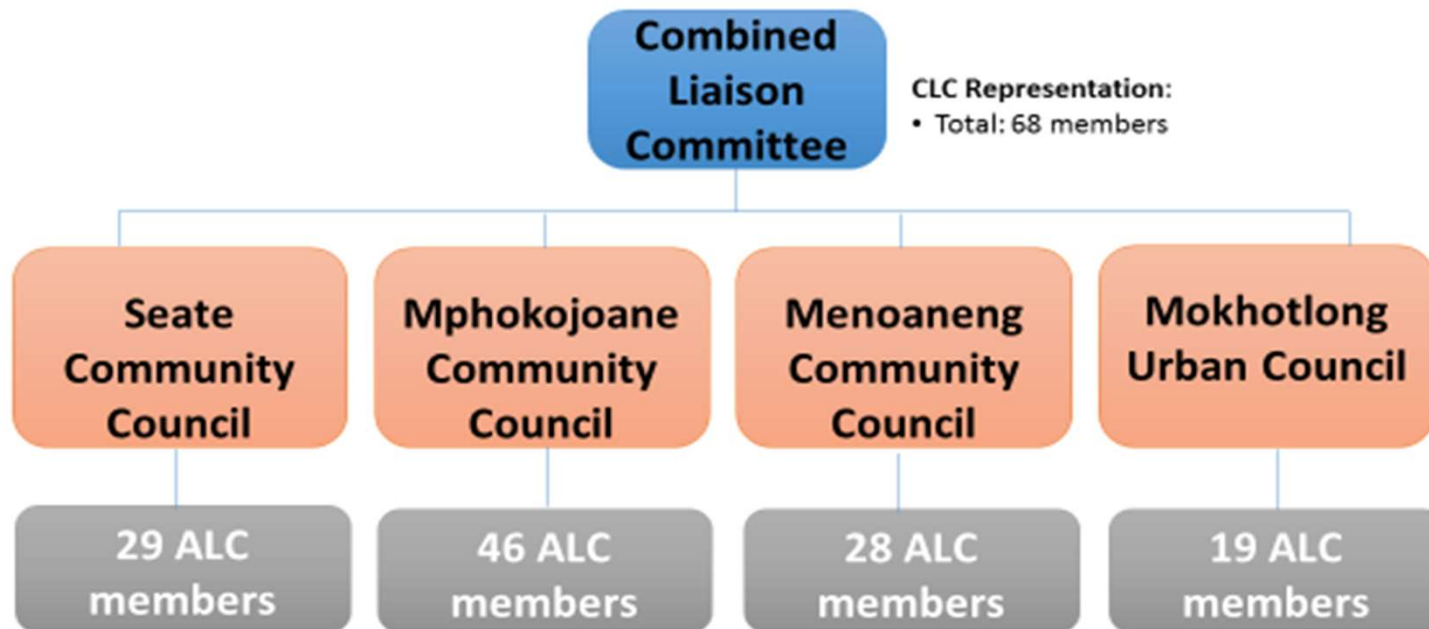
- Raise awareness
- Get ready for the project
- Avoid misconceptions
- Engender trust
- Involvement in regulatory instruments
- Involvement during studies (ESIA, RAPs, HIAs)



More than 30 years of successful collaboration



COMMUNITY PARTICIPATION STRUCTURE



CLC Representation:
• Total: 68 members

ALC Representation:

- 42 Community Councillors, 31 Chiefs, 49 village representatives and 4 NGO/CBO members
- Total: 126 members

More than 30 years of successful collaboration



LHWP PHASE II JOURNEY



PHASE II AGREEMENT (2011)

2012 – 2016 Baseline Studies

- Socio-Economic Baseline Study
- Biological and Archaeological Baseline Study
- Public Health Baseline Study
- Flow, Water Quality and Geomorphology Baseline Study, and an In-stream Flow Requirement Assessment for the Senqu River

2014 – 2017 Development of Regulatory Instruments

- Community Participation Strategy
- Public Health Policy
- Environmental Policy
- Compensation Policy
- Labour Recruitment Guidelines
- Livelihood Restoration and Social Development Framework

2016 – To Date Impact Assessment and Mitigation Plans

- Environmental and Social Impact Assessments
- Resettlement Action Plans
- Health Impact Assessment and Public Health Action Plan
- Project Labour Recruitment Desk
- Livelihood Restoration and Social Development Planning

Ongoing Stakeholder Engagement



CHALLENGES & LESSONS LEARNT

- Community Participation
- Community Expectations
- Involvement of NGOs
- Finalise infrastructure footprint based on social impacts
- Time between planning and actual construction
- Cut-Off Date for Eligibility of Compensation



More than 30 years of successful collaboration



THE JOURNEY GOING FORWARD

- Continue with stakeholder engagement
- Monitoring and evaluation programme
- Develop qualitative and quantitative indicators from ESIAs, RAPs and HIAs
- Circle back to stakeholders



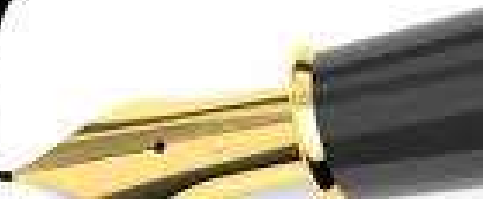
More than 30 years of successful collaboration



LESOTHO HIGHLANDS WATER PROJECT



Thank
you



More than 30 years of successful collaboration

